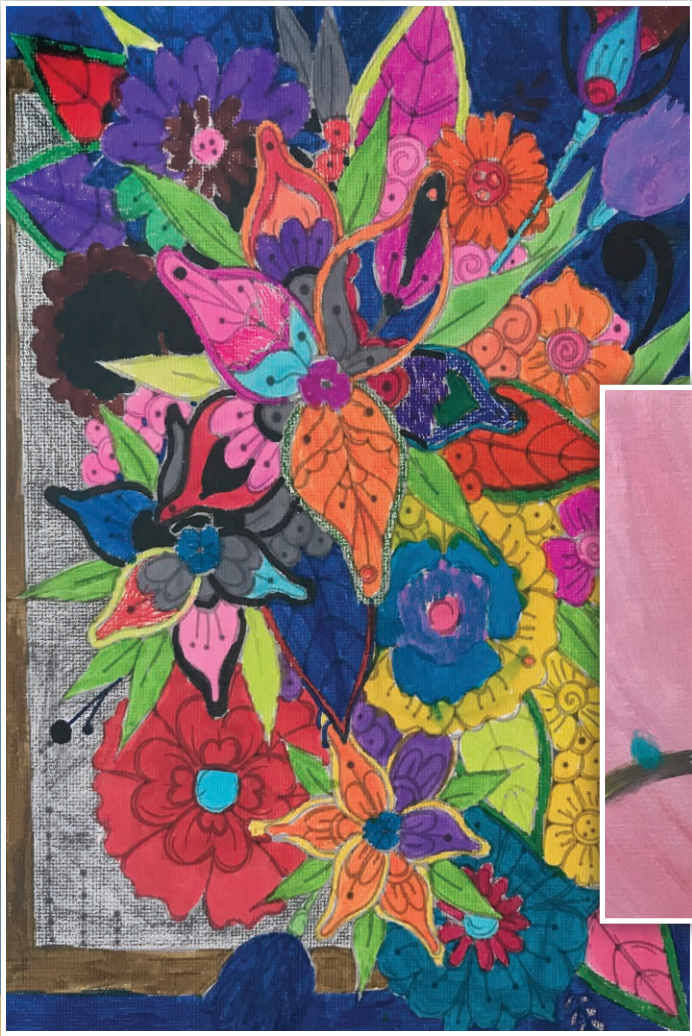


CREATIVELY

NORTHSHORE

2020-21 CALENDAR



Elizabeth | 7th |
Northshore Middle School | Full Moon



Abby | K | Maywood Hills Elementary | Hope for Spring



Kavya | 6th | Canyon Park Middle | The Beautiful Spring



Northshore
School District

Northshore Learns 3.0

Through collaboration and a commitment to our common purpose of creating safe, caring, respectful school environments, Northshore's students will learn at high levels, find their passion, and thrive. Our new learning management system will support both synchronous and asynchronous learning, as well as support both hybrid and face to face learning.

SYNCHRONOUS LEARNING IS REAL-TIME LEARNING:

- Direct instruction
- Small group learning
- Interventions
- Collaboration

ASYNCHRONOUS LEARNING IS FLEXIBLE LEARNING:

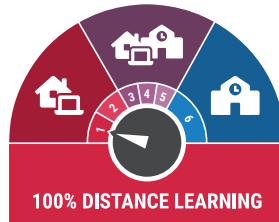
- Independent learning
- Provides choice and voice for students

Stages

Stages for learning models allow education to pivot at any time between distance, hybrid, and in-person learning. These stages will be determined by the impacts of a changing health situation, available resources, and direction from OSPI, our Governor, and our Health Department(s). As the public health situation continues to evolve, the District and the Northshore Education Association will continue to work together to renegotiate these models. *The District may modify stages as changing conditions require.*

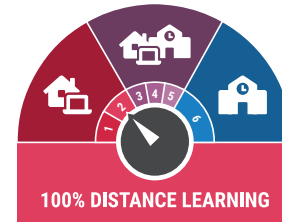
Due to the unpredictable nature of COVID-19, please know that some information within the calendar may change during the school year.

100% Distance Learning: Stage 1



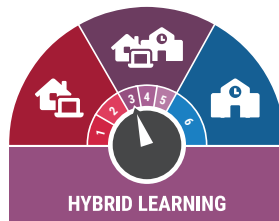
All students and staff participate in distance learning. School buildings closed for access.

100% Distance Learning: Stage 2



All students participate in distance learning. Staff able to be onsite for the purpose of planning and delivering online instruction.

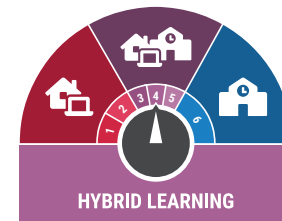
Hybrid Learning: Stage 3



Students in greatest need of additional support as identified through an agreed upon set of criteria participate onsite with in-person instruction two (2) days a week. All other students participate in distance learning.

Staff able to be onsite for the purpose of planning and delivering online instruction.

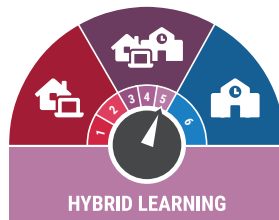
Hybrid Learning: Stage 4



All students from Stage 3, as well as our youngest learners, additional students in need of support (e.g. students considered "Prepared with Support" in 2019-20, 6th and 9th graders, etc.) participate onsite with in-person instruction two (2) days a week. All other students participate in distance learning.

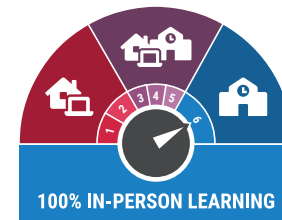
Staff able to be onsite for the purpose of planning and delivering online instruction.

Hybrid Learning: Stage 5



All students participate onsite with in-person instruction two (2) days a week. Staff able to be onsite for the purpose of planning and delivering online instruction.

100% In-Person Learning: Stage 6



All students and staff participate onsite with in-person instruction five (5) days a week.



Learn more about Northshore Learns 3.0 and the many resources and supports available for families by visiting nsd.org/northshorelearns.

District Leadership

Hello Northshore Families!

Our House is simply amazing!

No one could have predicted we would begin the school year in new spaces.

Even still, here we are.

Navigating back-to-school during a pandemic was challenging.

Opportunities for improvement were identified early in our response.

Recommendations poured in from across the District.

This community came together to re-imagine the possibilities.

Hard-working students, staff, families and partners collaborated.

Since March, we've been listening, planning and asking the question.

How do we create a Northshore educational experience that is world class, safe and nimble?

Outstanding work resulted in the status dial and Northshore Learns 3.0.

Resilience and optimism will be the key for our Northshore community!

Enjoy this historic year and this inspirational calendar, Creatively Northshore!

Dr. Michelle Reid, Superintendent

Phone: 425.408.7701

Email: superintendent@nsd.org

Twitter: @northshore_supt

The Northshore School District Board of Directors and staff appreciate your interest in Northshore public schools.

The Board of Directors consists of five members elected to serve, without compensation, for overlapping terms of four years each. While all school board members are elected from the district at large and represent the entire district, each school board position must come from one of five school board director districts. The board can better represent its constituents when you and others observe the board in action, express opinions and raise questions. Public participation and open lines of communication are vital to the educational success of our students.

Strategic Plan Goals

GOAL 1 » Success in the early years

GOAL 2 » Responsible, resilient, empathetic learners

GOAL 3 » Growth for every student, elimination of outcome and opportunity gaps

GOAL 4 » Innovative, creative, critical thinkers

GOAL 5 » Ready for lifelong success after graduation

More details about our 2017-22 Strategic Plan can be found at www.nsd.org/strategicplan

Board of Directors

Jacqueline McGourty DISTRICT 1

VICE PRESIDENT, Term expires 2021
425.408.7683, sbdistrict1@nsd.org

Bob Swain DISTRICT 2

PRESIDENT, Term expires 2023
425.408.7687, sbdistrict2@nsd.org

David Cogan DISTRICT 3

MEMBER, Term expires 2023
425.408.7689, sbdistrict3@nsd.org

Sandy Hayes DISTRICT 4

MEMBER, Term expires 2021
425.408.7690, sbdistrict4@nsd.org

Amy Cast DISTRICT 5

MEMBER, Term expires 2021
425.408.7691, sbdistrict5@nsd.org

School Board meeting information

School Board meetings are held on the second and fourth Mondays of the month at 4 p.m. and 7 p.m., respectively. The board will hold only one meeting in December, April and July. Board-related items, including agendas, minutes and board meeting videos, are posted online at www.nsd.org/board. For questions about agenda items or upcoming meetings, please call 425.408.7701, or connect with us at www.nsd.org/board.

From left: Amy Cast, Bob Swain, Jacqueline McGourty, Sandy Hayes, Dr. Michelle Reid, David Cogan





Abhinav | 5th | Lockwood Elementary | Changing Lives Around It



Emerson | 5th | Hollywood Hill Elementary | Night and Day



Leah | 4th | Kenmore Elementary | Lonely Swing



THIS MONTH'S INSPIRATION

"Be like a tree. Stay grounded. Connect with your roots. Go out on a limb. Bend before you break. Turn over a new leaf. Enjoy the view. Keep growing." – Unknown

Reflect on this quote and share how you are prepared to be like a tree this year. Share with us your goals for the school year ahead at www.nsd.org/creativelynorthshore.

SEPTEMBER 2020

SUNDAY	MONDAY	TUESDAY	WEDNESDAY	THURSDAY	FRIDAY	SATURDAY																																																																																																		
		1	2 FIRST DAY OF SCHOOL	3	4	5																																																																																																		
6	7 LABOR DAY NO SCHOOL	8	9	10	11 Patriot Day - Flags at Half Staff	12																																																																																																		
13	14 School Board Meeting 4 p.m.	15	16	17	18	19 *FEAST OF TRUMPETS *ROSH HASHANAH ENDS SEPT. 20																																																																																																		
20	21 FIRST DAY OF SCHOOL FOR SORENSON ECC	22 FIRST DAY OF AUTUMN	23 Wednesday Early Release	24	25	26																																																																																																		
27	28 School Board Meeting 7 p.m. *DAY OF ATONEMENT *YOM KIPPUR	29	30 Wednesday Early Release	<p>AUGUST 2020</p> <table> <tr><td>S</td><td>M</td><td>T</td><td>W</td><td>T</td><td>F</td><td>S</td></tr> <tr><td></td><td></td><td></td><td></td><td></td><td></td><td>1</td></tr> <tr><td>2</td><td>3</td><td>4</td><td>5</td><td>6</td><td>7</td><td>8</td></tr> <tr><td>9</td><td>10</td><td>11</td><td>12</td><td>13</td><td>14</td><td>15</td></tr> <tr><td>16</td><td>17</td><td>18</td><td>19</td><td>20</td><td>21</td><td>22</td></tr> <tr><td>23</td><td>24</td><td>25</td><td>26</td><td>27</td><td>28</td><td>29</td></tr> <tr><td>30</td><td>31</td><td></td><td></td><td></td><td></td><td></td></tr> </table>		S	M	T	W	T	F	S							1	2	3	4	5	6	7	8	9	10	11	12	13	14	15	16	17	18	19	20	21	22	23	24	25	26	27	28	29	30	31						<p>OCTOBER 2020</p> <table> <tr><td>S</td><td>M</td><td>T</td><td>W</td><td>T</td><td>F</td><td>S</td></tr> <tr><td></td><td></td><td></td><td></td><td></td><td>1</td><td>2</td></tr> <tr><td>3</td><td>4</td><td>5</td><td>6</td><td>7</td><td>8</td><td>9</td></tr> <tr><td>10</td><td>11</td><td>12</td><td>13</td><td>14</td><td>15</td><td>16</td></tr> <tr><td>17</td><td>18</td><td>19</td><td>20</td><td>21</td><td>22</td><td>23</td></tr> <tr><td>24</td><td>25</td><td>26</td><td>27</td><td>28</td><td>29</td><td>30</td></tr> <tr><td>31</td><td></td><td></td><td></td><td></td><td></td><td></td></tr> </table>	S	M	T	W	T	F	S						1	2	3	4	5	6	7	8	9	10	11	12	13	14	15	16	17	18	19	20	21	22	23	24	25	26	27	28	29	30	31						
S	M	T	W	T	F	S																																																																																																		
						1																																																																																																		
2	3	4	5	6	7	8																																																																																																		
9	10	11	12	13	14	15																																																																																																		
16	17	18	19	20	21	22																																																																																																		
23	24	25	26	27	28	29																																																																																																		
30	31																																																																																																							
S	M	T	W	T	F	S																																																																																																		
					1	2																																																																																																		
3	4	5	6	7	8	9																																																																																																		
10	11	12	13	14	15	16																																																																																																		
17	18	19	20	21	22	23																																																																																																		
24	25	26	27	28	29	30																																																																																																		
31																																																																																																								



Hailey | 8th | Timbercrest Middle | Pumpkin



Isabella | 1st | Fernwood Elementary | Books



THIS MONTH'S
ACTIVITY

Reflect on the start of the year. What was your favorite experience or activity? Share with us at www.nsd.org/creativelynorthshore.

OCTOBER 2020

SUNDAY	MONDAY	TUESDAY	WEDNESDAY	THURSDAY	FRIDAY	SATURDAY
		SEPTEMBER 2020 S M T W T F S 1 2 3 4 5 6 7 8 9 10 11 12 13 14 15 16 17 18 19 20 21 22 23 24 25 26 27 28 29 30	NOVEMBER 2020 S M T W T F S 1 2 3 4 5 6 7 8 9 10 11 12 13 14 15 16 17 18 19 20 21 22 23 24 25 26 27 28 29 30	1	2	3 *FEAST OF TABERNACLES ENDS OCT. 9
4	5	6	7 Wednesday Early Release	8	9	10
11	12 Indigenous Peoples' Day School Board Meeting 4 p.m.	13	14 Wednesday Early Release	15	16	17
18 BIRTH OF THE BĀB	19 BIRTH OF BAHÁ'U'LLÁH	20	21 Wednesday Early Release	22	23	24
25	26 School Board Meeting 7 p.m.	27	28 Wednesday Early Release	29	30 FIRST QUARTER ENDS	31



Julianna | 12th | Inglemoor High | Overcome



Laura | 11th | Woodinville High School | Always Reaching



THIS MONTH'S
INSPIRATION

Emotions can be conveyed in a variety of ways from art to dance to music. Share how you creatively express your feelings at www.nsd.org/creativelynorthshore.

NOVEMBER 2020

SUNDAY	MONDAY	TUESDAY	WEDNESDAY	THURSDAY	FRIDAY	SATURDAY
1 Daylight Savings Time - Set Clocks BACK One Hour	2	3 General Election - REMEMBER TO VOTE	4 Wednesday Early Release	5	6	7
8	9 School Board Meeting 4 p.m.	10	11 VETERANS DAY NO SCHOOL	12	13	14 DIWALI
15	16	17	18 Wednesday Early Release	19	20	21
22	23 School Board Meeting 7 p.m.	24	25 Wednesday Early Release	26 THANKSGIVING DAY NO SCHOOL	27 THANKSGIVING BREAK NO SCHOOL	28
29	30	OCTOBER 2020 S M T W T F S 1 2 3 4 5 6 7 8 9 10 11 12 13 14 15 16 17 18 19 20 21 22 23 24 25 26 27 28 29 30 31	DECEMBER 2020 S M T W T F S 1 2 3 4 5 6 7 8 9 10 11 12 13 14 15 16 17 18 19 20 21 22 23 24 25 26 27 28 29 30 31			



Maya | 5th | Hollywood Hill Elementary | Winter



THIS MONTH'S
ACTIVITY

As the seasons and world continue to change, how are you connecting and lending a hand to your community? Share with us at www.nsd.org/creativelynorthshore.

DECEMBER 2020

SUNDAY	MONDAY	TUESDAY	WEDNESDAY	THURSDAY	FRIDAY	SATURDAY
<p>NOVEMBER 2020</p> <p>S M T W T F S</p> <p>1 2 3 4 5 6 7</p> <p>8 9 10 11 12 13 14</p> <p>15 16 17 18 19 20 21</p> <p>22 23 24 25 26 27 28</p> <p>29 30</p>	<p>JANUARY 2021</p> <p>S M T W T F S</p> <p>1 2</p> <p>3 4 5 6 7 8 9</p> <p>10 11 12 13 14 15 16</p> <p>17 18 19 20 21 22 23</p> <p>24 25 26 27 28 29 30</p> <p>31</p>	1	2 Wednesday Early Release	3	4	5
6	7 Pearl Harbor Remembrance Day - Flags at Half Staff	8	9 Wednesday Early Release	10	11 *HANUKKAH ENDS DEC. 18	12
13	14 School Board Meeting 4 p.m.	15	16 Wednesday Early Release	17	18	19
20	21 WINTER BREAK NO SCHOOL FIRST DAY OF WINTER	22 WINTER BREAK NO SCHOOL	23 WINTER BREAK NO SCHOOL	24 WINTER BREAK NO SCHOOL CHRISTMAS EVE	25 WINTER BREAK NO SCHOOL CHRISTMAS	26 KWANZAA ENDS JAN. 1
27	28 WINTER BREAK NO SCHOOL	29 WINTER BREAK NO SCHOOL	30 WINTER BREAK NO SCHOOL	31 WINTER BREAK NO SCHOOL		

* Begins at sundown of previous day/ends at sundown



Anushka | 9th | North Creek High School | Nature Painting



THIS MONTH'S
ACTIVITY

*Imagine you're looking into the year ahead, what are your goals?
Share with us at www.nsd.org/creativelynorthshore.*

JANUARY 2021

SUNDAY	MONDAY	TUESDAY	WEDNESDAY	THURSDAY	FRIDAY	SATURDAY
			DECEMBER 2020 S M T W T F S 1 2 3 4 5 6 7 8 9 10 11 12 13 14 15 16 17 18 19 20 21 22 23 24 25 26 27 28 29 30 31	FEBRUARY 2021 S M T W T F S 1 2 3 4 5 6 7 8 9 10 11 12 13 14 15 16 17 18 19 20 21 22 23 24 25 26 27 28	1 NEW YEAR'S DAY NO SCHOOL	2
3	4 SCHOOL RESUMES	5	6 Wednesday Early Release	7 ORTHODOX CHRISTMAS	8	9
10	11 School Board Meeting 4 p.m.	12	13 Wednesday Early Release	14	15	16
17	18 MARTIN LUTHER KING, JR DAY NO SCHOOL	19	20 Wednesday Early Release	21	22 FIRST SEMESTER ENDS	23
24	25 NON-STUDENT DAY / GRADING DAY NO SCHOOL	26	27 Wednesday Early Release	28	29	30
31	School Board Meeting 7 p.m.					



Will | 4th | Maywood Hills Elementary | Fox



Chuyu | K | Lockwood Elementary | My Dream House



Arseny | 8th | Leota Middle School | Girl with Flowers



THIS MONTH'S
ACTIVITY

Details come together to create the bigger picture. Reflect on how you contribute to the world locally and globally. Share with us at www.nsd.org/creativelynorthshore.

FEBRUARY 2021

SUNDAY	MONDAY	TUESDAY	WEDNESDAY	THURSDAY	FRIDAY	SATURDAY
	1	2	3 Wednesday Early Release	4	5	6
7	8 School Board Meeting 4 p.m.	9	10 Wednesday Early Release	11	12 CHINESE (LUNAR) NEW YEAR	13
14	15 PRESIDENTS' DAY NO SCHOOL	16 MID WINTER BREAK NO SCHOOL	17 MID WINTER BREAK NO SCHOOL LENT ENDS APRIL 3 ASH WEDNESDAY	18 MID WINTER BREAK NO SCHOOL	19 MID WINTER BREAK NO SCHOOL	20
21	22 School Board Meeting 7 p.m.	23	24 Wednesday Early Release	25	26	27
28	JANUARY 2021 S M T W T F S 1 2 3 4 5 6 7 8 9 10 11 12 13 14 15 16 17 18 19 20 21 22 23 24 25 26 27 28 29 30 31	MARCH 2021 S M T W T F S 1 2 3 4 5 6 7 8 9 10 11 12 13 14 15 16 17 18 19 20 21 22 23 24 25 26 27 28 29 30 31				



Ayush | 1st | Shelton View Elementary School | Tiger



Katie | 7th | Timbercrest | Bengal Tiger



THIS MONTH'S
INSPIRATION

"Be the lion. Be the tiger. Be the bear. Be confident." – Unknown

Share with us how you build confidence in yourself and others at www.nsd.org/creativelynorthshore.

MARCH 2021

SUNDAY	MONDAY	TUESDAY	WEDNESDAY	THURSDAY	FRIDAY	SATURDAY
	1 IB Information Night for Class of 2025, 7 p.m., NPAC *THE BAHÁ'Í FAST ENDS MARCH 19	2	3 Wednesday Early Release	4	5	6
7	8 School Board Meeting 4 p.m.	9	10 Wednesday Early Release	11 MAHA SHIVARATRI	12	13
14 Daylight Saving Time - Set Clocks AHEAD One Hour	15 ORTHODOX LENT ENDS MAY 1	16	17 Wednesday Early Release	18	19	20 FIRST DAY OF SPRING *BAHÁ'Í NEW YEAR
21	22 School Board Meeting 7 p.m.	23	24 Wednesday Early Release	25	26	27
28 *PASSOVER	29	30	31 Wednesday Early Release	FEBRUARY 2021 S M T W T F S 1 2 3 4 5 6 7 8 9 10 11 12 13 14 15 16 17 18 19 20 21 22 23 24 25 26 27 28	APRIL 2021 S M T W T F S 1 2 3 4 5 6 7 8 9 10 11 12 13 14 15 16 17 18 19 20 21 22 23 24 25 26 27 28 29 30	

Elijah | 4th | Kokanee Elementary | This is Me

APRIL 2021

SUNDAY	MONDAY	TUESDAY	WEDNESDAY	THURSDAY	FRIDAY	SATURDAY
		MARCH 2021 S M T W T F S 1 2 3 4 5 6 7 8 9 10 11 12 13 14 15 16 17 18 19 20 21 22 23 24 25 26 27 28 29 30 31	MAY 2021 S M T W T F S 1 2 3 4 5 6 7 8 9 10 11 12 13 14 15 16 17 18 19 20 21 22 23 24 25 26 27 28 29 30 31	1	2	3
					GOOD FRIDAY	*FEAST OF UNLEAVENED BREAD
4 EASTER	5	6	7 Wednesday Early Release	8	9	10
					THIRD QUARTER ENDS	
11	12 SPRING BREAK NO SCHOOL	13 SPRING BREAK NO SCHOOL *RAMADAN ENDS MAY 11	14 SPRING BREAK NO SCHOOL	15 SPRING BREAK NO SCHOOL	16 SPRING BREAK NO SCHOOL	17
18	19	20	21 Wednesday Early Release	22	23	24
25	26 School Board Meeting 7 p.m.	27	28 Wednesday Early Release NINTH DAY OF RIDVÁN	29	30 ORTHODOX GOOD FRIDAY	



Jason | 8th | Kenmore Middle School | Dolphins



Helen | 5th | Lockwood Elementary | Jellyfish



THIS MONTH'S ACTIVITY

If you could travel anywhere in the world, where would you go? What would you do and why? Share with us at www.nsd.org/creativelynorthshore.

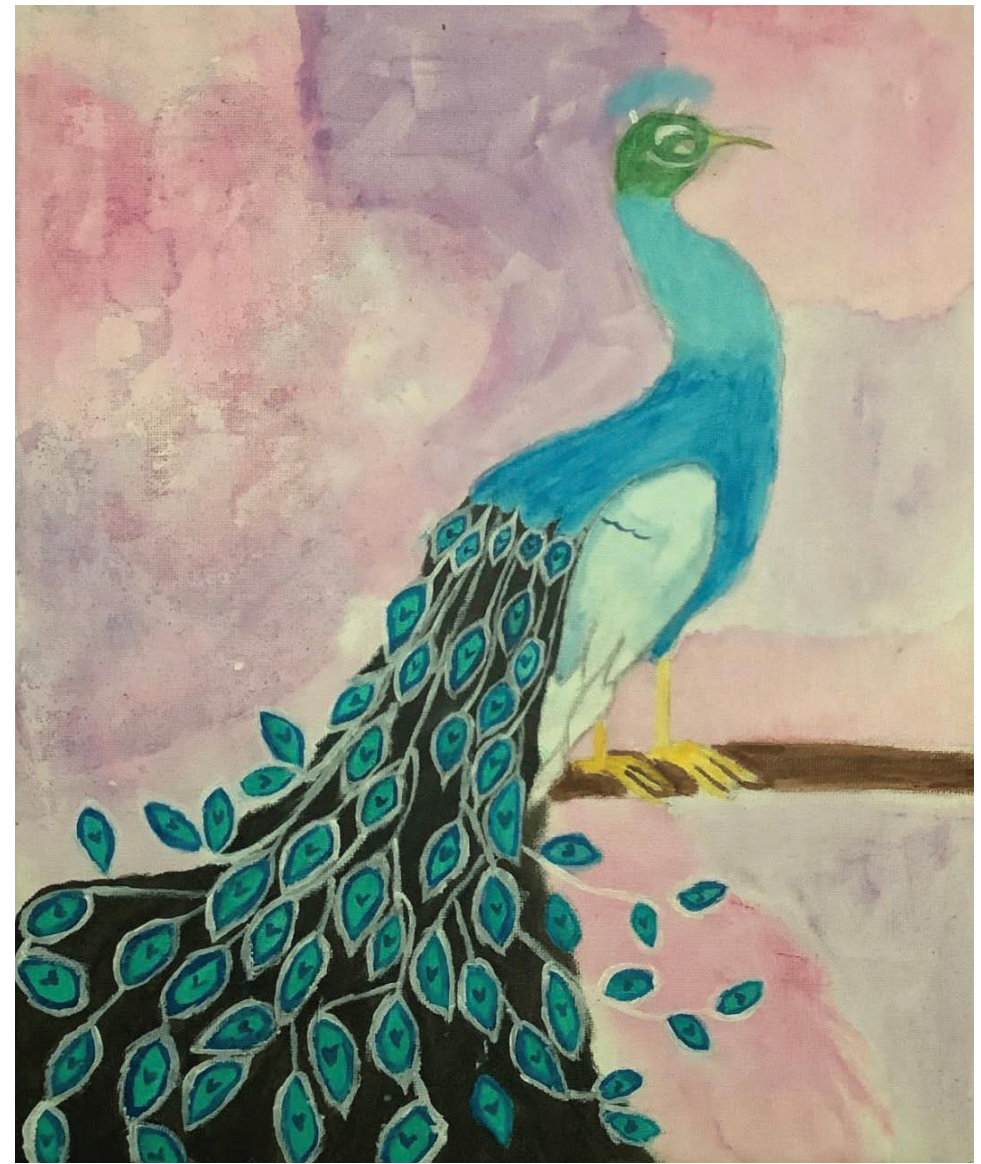
MAY 2021

SUNDAY	MONDAY	TUESDAY	WEDNESDAY	THURSDAY	FRIDAY	SATURDAY																																																																																				
				<div>APRIL 2021</div> <table><tr><td>S</td><td>M</td><td>T</td><td>W</td><td>T</td><td>F</td><td>S</td></tr><tr><td></td><td></td><td></td><td></td><td>1</td><td>2</td><td>3</td></tr><tr><td>4</td><td>5</td><td>6</td><td>7</td><td>8</td><td>9</td><td>10</td></tr><tr><td>11</td><td>12</td><td>13</td><td>14</td><td>15</td><td>16</td><td>17</td></tr><tr><td>18</td><td>19</td><td>20</td><td>21</td><td>22</td><td>23</td><td>24</td></tr><tr><td>25</td><td>26</td><td>27</td><td>28</td><td>29</td><td>30</td><td></td></tr></table>	S	M	T	W	T	F	S					1	2	3	4	5	6	7	8	9	10	11	12	13	14	15	16	17	18	19	20	21	22	23	24	25	26	27	28	29	30		<div>JUNE 2021</div> <table><tr><td>S</td><td>M</td><td>T</td><td>W</td><td>T</td><td>F</td><td>S</td></tr><tr><td></td><td></td><td>1</td><td>2</td><td>3</td><td>4</td><td>5</td></tr><tr><td>6</td><td>7</td><td>8</td><td>9</td><td>10</td><td>11</td><td>12</td></tr><tr><td>13</td><td>14</td><td>15</td><td>16</td><td>17</td><td>18</td><td>19</td></tr><tr><td>20</td><td>21</td><td>22</td><td>23</td><td>24</td><td>25</td><td>26</td></tr><tr><td>27</td><td>28</td><td>29</td><td>30</td><td></td><td></td><td></td></tr></table>	S	M	T	W	T	F	S			1	2	3	4	5	6	7	8	9	10	11	12	13	14	15	16	17	18	19	20	21	22	23	24	25	26	27	28	29	30				<div>1</div> <div>TWELFTH DAY OF RIDVÁN</div>
S	M	T	W	T	F	S																																																																																				
				1	2	3																																																																																				
4	5	6	7	8	9	10																																																																																				
11	12	13	14	15	16	17																																																																																				
18	19	20	21	22	23	24																																																																																				
25	26	27	28	29	30																																																																																					
S	M	T	W	T	F	S																																																																																				
		1	2	3	4	5																																																																																				
6	7	8	9	10	11	12																																																																																				
13	14	15	16	17	18	19																																																																																				
20	21	22	23	24	25	26																																																																																				
27	28	29	30																																																																																							
<div>2</div> <div>ORTHODOX EASTER</div>	<div>3</div>	<div>4</div>	<div>5</div> <div>Wednesday Early Release</div>	<div>6</div>	<div>7</div>	<div>8</div>																																																																																				
<div>9</div> <div>Mother's Day</div>	<div>10</div> <div>School Board Meeting 4 p.m.</div>	<div>11</div>	<div>12</div> <div>Wednesday Early Release</div>	<div>13</div> <div>*EID AL FITR</div>	<div>14</div>	<div>15</div> <div>Peace Officers Memorial Day - Flags at Half Staff</div>																																																																																				
<div>16</div>	<div>17</div>	<div>18</div>	<div>19</div> <div>Wednesday Early Release</div>	<div>20</div> <div>C.P. and Dorothy Johnson Humanitarian Awards</div>	<div>21</div>	<div>22</div>																																																																																				
<div>23</div> <div>DECLARATION OF BÁB</div>	<div>24</div> <div>School Board Meeting 7 p.m.</div>	<div>25</div>	<div>26</div> <div>Wednesday Early Release</div>	<div>27</div>	<div>28</div> <div>Vacation Day/Emergency Make-up Day</div>	<div>29</div>																																																																																				
<div>30</div>	<div>31</div> <div>MEMORIAL DAY NO SCHOOL</div>				<div>ASCENSION OF BAHÁ'U'LLÁH</div>																																																																																					

* Begins at sundown of previous day/ends at sundown



Ayna | 2nd | Frank Love Elementary School | Blue Heron!



Tejasvi | 8th | Skyview Middle School | Peacock



THIS MONTH'S
ACTIVITY

As you look forward to soaring into the next year, how will you continue to learn throughout the summer? Share with us at www.nsd.org/creativelynorthshore.

JUNE 2021

SUNDAY	MONDAY	TUESDAY	WEDNESDAY	THURSDAY	FRIDAY	SATURDAY
		1	2 Wednesday Early Release	3 District Retirement Celebration	4	5
6	7	8 ATP Programs Graduation	9 Wednesday Early Release	10 Secondary Academy for Success Northshore Networks Graduations	11	12
13	14 School Board Meeting 4 p.m. Flag Day	15 HIGH SCHOOL GRADUATIONS Inglemoor 3:30 p.m. / Bothell 7:00 p.m.	16 HIGH SCHOOL GRADUATIONS North Creek 3:30 p.m. / Woodinville 7:00 p.m. Wednesday Early Release	17	18 LAST DAY OF SCHOOL	19
20 Father's Day FIRST DAY OF SUMMER	21 NON-STUDENT DAY / GRADING DAY *Emergency Make-up Day	22 *Emergency Make-up Day	23	24	25	26
27	28 School Board Meeting 7 p.m.	29	30	MAY 2021 S M T W T F S 1 2 3 4 5 6 7 8 9 10 11 12 13 14 15 16 17 18 19 20 21 22 23 24 25 26 27 28 29 30 31		JULY 2021 S M T W T F S 1 2 3 4 5 6 7 8 9 10 11 12 13 14 15 16 17 18 19 20 21 22 23 24 25 26 27 28 29 30 31

JULY 2021

SUNDAY	MONDAY	TUESDAY	WEDNESDAY	THURSDAY	FRIDAY	SATURDAY
		JUNE 2021 S M T W T F S 1 2 3 4 5 6 7 8 9 10 11 12 13 14 15 16 17 18 19 20 21 22 23 24 25 26 27 28 29 30	AUGUST 2021 S M T W T F S 1 2 3 4 5 6 7 8 9 10 11 12 13 14 15 16 17 18 19 20 21 22 23 24 25 26 27 28 29 30 31	1	2	3
4 FOURTH OF JULY	5 FOURTH OF JULY BREAK DISTRICT OFFICES CLOSED	6 FOURTH OF JULY BREAK DISTRICT OFFICES CLOSED	7	8	9	10
11	12 School Board Meeting 4 p.m.	13	14	15	16	17
18	19	20 *EID AL-ADHA ENDS JULY 23	21	22	23	24
25	26	27	28	29	30	31

AUGUST 2021

SUNDAY	MONDAY	TUESDAY	WEDNESDAY	THURSDAY	FRIDAY	SATURDAY
1	2	3	4	5	6	7
8	9 School Board Meeting 4 p.m.	10	11	12	13	14
15	16	17	18	19	20	21
22	23 School Board Meeting 7 p.m.	24	25	26 *ASHURA	27	28
29	30 *JANMASHTAMI	31	JULY 2021 S M T W T F S 1 2 3 4 5 6 7 8 9 10 11 12 13 14 15 16 17 18 19 20 21 22 23 24 25 26 27 28 29 30 31	SEPTEMBER 2021 S M T W T F S 1 2 3 4 5 6 7 8 9 10 11 12 13 14 15 16 17 18 19 20 21 22 23 24 25 26 27 28 29 30		

* Begins at sundown of previous day/ends at sundown

School Contact Information

During our staged approach for reopening school buildings, staff may be answering phones remotely. Please leave a message with your name, phone number and reason for calling so that the appropriate staff member can return your call.

WEEKLY COLLABORATION SCHEDULE

The district will implement a weekly early release on Wednesdays beginning September 23, to support better instructional needs. Early release will occur on the following Wednesdays during the 2020-21 school year: September 23, 30; October 7, 14, 21, 28; November 4, 18, 25; December 2, 9, 16; January 6, 13, 20, 27; February 3, 10, 24; March 3, 10, 17, 24, 31; April 7, 21, 28; May 5, 12, 19, 26; and June 2, 9, 16.

DISTRICT PROGRAMS WITH NO SCHOOL ON WEDNESDAYS

Early Childhood Programs

Hollywood Hill Phonology

Kenmore Head Start

Sorenson ECC Preschool

Woodmoor ECEAP

Woodmoor Preschool

Adult Transition Programs

ATP Networks

ATP Pathways



Charlotte | 1st | Fernwood Elementary | Home in the Sun

Elementary	Address	Office Phone	Attendance Phone	Website
Arrowhead	6725 NE Arrowhead Drive, Kenmore, WA 98028	425.408.4000	425.408.4000	nsd.org/arrowhead
Canyon Creek	21400 35th Avenue SE, Bothell, WA 98021	425.408.5700	425.408.5710	nsd.org/canyoncreek
Cottage Lake	15940 Avondale Road NE, Woodinville, WA 98077	425.408.4200	425.408.4200	nsd.org/cottagelake
Crystal Springs	21615 9th Avenue SE, Bothell, WA 98021	425.408.4300	425.408.4300	nsd.org/crystalsprings
East Ridge	22150 NE 156th Place, Woodinville, WA 98077	425.408.4400	425.408.4410	nsd.org/eastridge
Fernwood	3933 Jewell Road, Bothell, WA 98012	425.408.4500	425.408.4500	nsd.org/fernwood
Frank Love	303 224th Street SW, Bothell, WA 98021	425.408.4600	425.408.4600	nsd.org/franklove
Hollywood Hill	17110 148th Avenue NE, Woodinville, WA 98072	425.408.4700	425.408.4700	nsd.org/hollywoodhill
Kenmore	19121 71st Avenue NE, Kenmore, WA 98028	425.408.4800	425.408.4800	nsd.org/kenmore
Kokanee	23710 57th Avenue SE, Woodinville, WA 98072	425.408.4900	425.408.4900	nsd.org/kokanee
Lockwood	24118 Lockwood Road, Bothell, WA 98021	425.408.5800	425.408.5800	nsd.org/lockwood
Maywood Hills	19510 104th Avenue NE, Bothell, WA 98011	425.408.5000	425.408.5000	nsd.org/maywood
Moorlands	15115 84th Avenue NE, Kenmore, WA 98028	425.408.5100	425.408.5100	nsd.org/moorlands
Ruby Bridges	20510 49th Drive SE, Woodinville, WA 98072	425.408.8700	425.408.8700	nsd.org/rubybridges
Shelton View	23400 5th Avenue W, Bothell, WA 98021	425.408.5200	425.408.5200	nsd.org/sheltonview
Sunrise	14075 172nd Avenue NE, Redmond, WA 98052	425.408.5300	425.408.5300	nsd.org/sunrise
Wellington	16501 NE 195th Street, Woodinville, WA 98072	425.408.5900	425.408.5900	nsd.org/wellington
Westhill	19515 88th Avenue NE, Bothell, WA 98011	425.408.5500	425.408.5500	nsd.org/westhill
Woodin	12950 NE 195th Street, Bothell, WA 98011	425.408.5400	425.408.5400	nsd.org/woodin
Woodmoor	12225 NE 160th, Bothell, WA 98011	425.408.5600	425.408.5610	nsd.org/woodmoor

Middle School	Address	Office Phone	Attendance Phone	Website
Canyon Park	23723 23rd Avenue SE, Bothell, WA 98021	425.408.6300	425.408.6310	nsd.org/canyonpark
Kenmore	20323 66th Avenue NE, Kenmore, WA 98028	425.408.6400	425.408.6410	nsd.org/kenmorems
Leota	19301 168th Avenue NE, Woodinville, WA 98072	425.408.6500	425.408.6510	nsd.org/leota
Northshore	12101 NE 160th Street, Bothell, WA 98011	425.408.6700	425.408.6710	nsd.org/northshore
Skyview	21404 35th Avenue SE, Bothell, WA 98021	425.408.6800	425.408.6810	nsd.org/skyview
Timbercrest	19115 215th Way NE, Woodinville, WA 98077	425.408.6900	425.408.6910	nsd.org/timbercrest

High School	Address	Office Phone	Attendance Phone	Website
Bothell	9130 NE 180th Street, Bothell, WA 98011	425.408.7000	425.408.7010	nsd.org/bothell
Inglemoor	15500 Simonds Road NE, Kenmore, WA 98028	425.408.7200	425.408.7210	nsd.org/inglemoor
North Creek	3613 191st PL SE, Bothell, WA 98012	425.408.8800	425.408.8810	nsd.org/northcreek
Woodinville	19819 136th Avenue NE, Woodinville, WA 98072	425.408.7400	425.408.7410	nsd.org/woodinville
SAS	22107 23rd Drive SE, Bothell, WA 98021	425.408.6600	425.408.6610	nsd.org/sas
Innovation Lab High School	2020 224th St SE, Bothell, WA 98021	425.408.6200	425.408.6221	nsd.org/innovationlab

Special Programs	Address	Office Phone	4/5 Day Program	Website
Sorenson ECC	19705 88th Avenue NE, Bothell, WA 98011	425.408.5570	M, T, Th, F	nsd.org/sorenson
Northshore Networks	18101 Avondale Rd NE, Woodinville, WA 98077	425.408.4175	NA	nsd.org/networks
Northshore Family Partnership	18101 Avondale Rd NE, Woodinville, WA 98077	425.408.4100	M, T, W, Th	nsd.org/nfp

Emergency information

Emergencies such as inclement weather, power outages and hazardous road conditions can alter school schedules and affect bus transportation. The decision to close or delay schools is made by the superintendent as early as possible, usually around 5:30 a.m. Early dismissals will occur only if delay in dismissal significantly increases hazards. In the event an early dismissal is required, it is important that you have a plan for your student.

The District uses an automated message system to quickly send alerts to families. For major announcements and in the event of a school or district emergency, the district or school will likely call and send text messages as well as emailing and send an app notification. **The system only works if your contact numbers and emails are current in the student information system.** Please update your contact information annually with your child's school. You may also download our mobile app. Instructions are available on our website at www.nsd.org/mobileapp.

The decision to close schools or delay start times will be announced on www.flashalert.net, most radio and television stations and the district website. Families will be notified using the district's emergency messaging systems and mobile app. You may also call the district information line at 425.408.6001, beginning at 6 a.m., for school closure information.

If the May 28 emergency makeup day is used, additional days may be added to the end of the school year. If "Northshore School District #417" is not mentioned during the newscast, it means schools are open, with buses operating as normally as possible. If Northshore is mentioned, one of the following situations will be announced:

1. "2 HOURS LATE, NORMAL BUS ROUTES" MEANS:

- Buses start 2 hours late on normal routes
- School starts 2 hours late with regular full day dismissal time
- All partial programs cancelled
- No ATP Networks, Sorenson ECC, Head Start, Early Childhood Education and Assistance program, or preschool/pre-k programs, Dartmoor and Dolan Academy
- No in-district CTE satellite shuttles
- No out-of-district transportation
- No elementary band/orchestra
- No zero-period classes
- No before-school activities

2. "2 HOURS LATE, SNOW (LIMITED OR ALTERNATE) BUS ROUTES" MEANS:

- Buses start 2 hours late on snow (limited or alternate) routes. Visit www.nsd.org/bus to find snow routes.
- School starts 2 hours late with regular full day dismissal time
- All partial programs cancelled
- No ATP Networks, Sorenson ECC, Head Start, Early Childhood Education and Assistance program, or preschool/pre-k programs, Dartmoor and Dolan Academy
- No in-district CTE satellite shuttles
- No out-of-district transportation
- No elementary band/orchestra
- No zero-period classes
- No before-school activities

3. "ON TIME, SNOW (LIMITED OR ALTERNATE) BUS ROUTES" MEANS:

- Buses start at normal time on snow (limited or alternate) routes. Visit www.nsd.org/bus to find snow routes.

4. "CLOSED" MEANS:

- All district schools closed
- No after-school/evening activities, athletics, or band/orchestra

Snow (limited or alternate) bus route locations are available online at www.nsd.org/bus. Check in advance to see if your bus route is one that could be affected by inclement weather. Drivers will avoid stopping on hills when slippery and may change bus stops to the bottom of the hill. Changing conditions may cause the district to alter the status of school. Listen to radio and television for the latest information. Copies of suggested Walking Area Maps are available online at www.nsd.org/bus or by contacting the Transportation Department at transportation@nsd.org or 425.408.7900.

STUDENT INJURIES AND INSURANCE COVERAGE

The health and safety of our students is one of our most important concerns. Even so, accidents may and do happen and the resulting medical bills (ambulance transport, surgery, etc.) can be very expensive. However, many families are unaware that the district does not carry insurance for these costs and cannot assume responsibility for them. Typically, if your child gets hurt during school activities you, as the parent or guardian, are responsible for any medical expenses. This includes students participating in athletics. Please make certain your family insurance plan covers athletic participation.

Annually, as a service, we provide information to all parents and guardians on an optional student accident insurance plan. This coverage plan is used by many school districts across the state and is administered by Myers-Stevens & Toohey, Inc. If you are interested in more information, please visit our website or you can go directly to the Myers website at myers-stevens.com (or phone them at 800.827.4695).

SAFE SCHOOLS ALERT

Students, staff, and members of the community can report concerns anonymously by using the SafeSchools Alert.

- Email: 1414@alert1.us
- Phone: 855.521.2665
- Text: 855.521.2665
- Online: <http://1414.alert1.us>

STUDENT SAFETY

The safety of staff, students and parents is Northshore's top priority. The district is committed to providing positive and productive school and work environments that are free from discrimination, harassment (including sexual harassment), intimidation or bullying. More information and resources regarding safe interaction with students is available on the district's website at nsd.org.

Northshore continues to take proactive measures to protect the safety of all students and staff. The district works closely with first responders to assure district plans are made in concert with all other local emergency preparedness plans. The district and all schools have safety and security plans in place.

REPORTING SUSPICIOUS ACTIVITY

Northshore students, staff or community members should report suspicious activities in and around our schools by calling 9-1-1 and the district's 24-hour emergency number, 425.485.9535. Anonymous reports can be made to the district by using the SafeSchools Alert.

EMERGENCY OPERATIONS PLANS (EOP)

Emergency Operation Plans set guidelines to manage a disaster in an effective, efficient, and timely manner. The EOP will help the district respond to emergencies, support schools during an emergency and restore the district or individual schools back to normal operations as quickly as is possible per the severity of the emergency. Each school site in the district has a Safety/Emergency Prep Committee that plans for unique situations related to the school site.

More detailed Safety/Emergency Prep information can be found at <https://www.nsd.org/our-district/who-we-are/safety-security>.

STAFF QUALIFICATIONS

Pursuant to Every Student Succeeds Act (ESSA), parents of Title I, Part A students may request the professional qualifications of your child's classroom teacher(s) or paraeducators by contacting your child's school. The Northshore School District will provide you with the information as soon as possible upon request. Thank you for your interest and involvement in your child's education.

STUDENT ASSESSMENT

Northshore School District uses a variety of assessments to fulfill state and federal accountability, to screen and progress monitor students, to inform instruction, and aid in academic placement guidance. State testing measures student achievement in Math and English Language Arts Common Core State Standards. Other content areas align with state learning standards. For the 2020-21 school year, the Washington Comprehensive Assessment Program will consist of the English Language Arts and Math Smarter Balanced Assessments and the Washington Comprehensive Assessment in Science (WCAS). For some identified IEP students, the Washington Access to Instruction and Measurement (WA-AIM) will be administered instead of Smarter Balanced/WCAS assessments. For English language learners, the English Language Proficiency Assessment for 21st Century Skills (ELPA21), or the World-Class Instructional Design and Assessment (WIDA) for highly impacted special education students, will be administered to determine their proficiency in English.

SMARTER BALANCED AND WASHINGTON COMPREHENSIVE ASSESSMENT OF SCIENCE (WCAS)

The Smarter Balanced Assessment assesses English Language Arts (ELA) and Mathematics and is required by state law for grades 3-8 and 10. The WCAS exam is administered in grades 5, 8, and 11. In addition, 10th graders take the ELA and Mathematics Smarter Balanced assessments as an option to satisfy the state pathways graduation requirement. Students in high school who receive a level 3 or 4 on the Smarter Balanced assessments will not need to take placement exams for entrance to Washington State colleges and universities. Students who need a passing score have the opportunity to satisfy the pathways requirement through re-takes and/or other pathway options.

SCHOOL AND DISTRICT PERFORMANCE DATA

The Every Student Succeeds Act (ESSA), also known as the "No Child Left Behind Act of 2001" (NCLB), requires all schools, school districts and states to publish "report cards" highlighting their progress. They provide data on the Washington Comprehensive Assessment Program by gender, disability, economics, English proficiency, migrant/bilingual status, as well as school demographics, graduation and dropout rates for secondary students and school improvement plans. This information is available on the district website at www.nsd.org/schoolperformancereports.

Student information

REGISTRATION

New students may register year-round via online enrollment to begin school attendance. Attendance area is based on residency address. Visit the District website to determine your child's attendance area by visiting nsd.org/findmyschool.

REQUIRED REGISTRATION DOCUMENTS: proof of child's birth date (birth certificate or passport), proof of residency, official immunization record, and withdrawal sheet or report card from previous school (grades 6-12 only). Students entering kindergarten or first grade must be five or six years old on or before Aug. 31 (dependent on grade entering).

KINDERGARTEN

Kindergarten students will be enrolled for the 2021-22 school year via our online enrollment on the nsd.org website beginning mid-January of 2021. The website provides instructions and guidance on the documents and information that will be needed in order to register your student. If you have additional questions, you should contact your designated school office.

WAIVERS

OUT OF DISTRICT: Families who reside in another district and would like to attend Northshore School District must complete the choice transfer form available from their resident district. Families will need to reapply every year.

IN DISTRICT: Families who live within the geographic boundaries of the Northshore School District and want to attend a Northshore school other than their assigned neighborhood school must complete a waiver. The waiver form is available online at <https://www.nsd.org/schools/get-started/waivers/waiver-forms> or through the Office of Student Services, 425.408.7725.

VARIANCE: Families who live within the geographical boundaries of the Northshore School District and want to attend a school in another district must complete a release form. The release form is available online at <https://www.nsd.org/schools/get-started/waivers/waiver-forms> or through the Office of Student Services, 425.408.7725.

MCKINNEY-VENTO: The McKinney-Vento Act is federal legislation that has been in effect since 1987 to support homeless children and youth experiencing homelessness. The McKinney-Vento Act defines "homeless children and youth" as individuals who lack a fixed, regular and adequate nighttime residence. The intent of the McKinney-Vento Act is to ensure that homeless children and youth enroll and succeed in school. For more information about Northshore's Homeless Services, please visit <https://www.nsd.org/resources/support/homeless-services>.

WHAT IS CHILD FIND?

The process of locating and evaluating children with disabilities is referred to as "Child Find." The Individuals with Disabilities Education Act (IDEA) requires all school districts to locate, evaluate and provide services for individuals age birth to 21, who may have a disability. Contact the principal or school psychologist at your home school if you:

- Have questions about whether your child has a disability
- Are concerned about your infant, toddler, or preschooler's development
- Know your child has a disability and are looking for appropriate educational services
- Would like to know how to help your school-age child succeed in school

You can also contact the district's Special Education office at 425.408.7733 for assistance. Any student or child whether or not enrolled in school may be referred for a special education evaluation by parents, district staff or other persons knowledgeable about the student. The school team will invite you to a meeting to discuss your concerns and devise a plan of action. A special education evaluation may be recommended at this time. If your child is not yet school age, please contact the Sorenson Early Childhood Center at 425.408.5570.

ENROLLING STUDENTS WITH MEDICAL CONDITIONS

Contact Student Health Services, 425.408.7728 or the school nurse if your child has a medical condition that requires:

- Medication at school that are injected (except epinephrine- auto-injectors), suppository, or nasal administration
- Assistance with a procedure during the school day, such as blood sugars, catheterization, or G-tube feedings

STUDENT MEDICATIONS/LIFE THREATENING CONDITIONS

When students are required to take medications during school, both over-the-counter and prescription, the school office must have a medication authorization form signed by the parent and licensed health care provider.

- This form is available at your school or on the district website, <https://www.nsd.org/schools/get-started/health-services/medication-at-schools>.
- Medication delivered to school by the parent in a properly labeled prescription container or original bottle.

Students with a life-threatening condition (LTC) must, by law, have signed medication orders and a school nursing care plan in place before they attend school. Information can be found at <https://www.nsd.org/schools/get-started/health-services>. Contact your school nurse for more information.

IMMUNIZATIONS

There are changes to state immunization rules for schools and childcare centers that became effective as of Aug. 1, 2020. These changes include:

1. All immunization records turned in to schools or childcare centers after August 1, 2020, are required by state law to be medically verified. This means immunization records turned in to the school must be from a health care provider, or you must attach paperwork from a health care provider to your handwritten form that shows your child's records are accurate. Additionally, you may submit a Certificate of Immunization Status (CIS) printed from the Immunization Information System (IIS), which will not have a provider's signature.
2. Students who are making progress toward completing their immunization requirements will be granted conditional status for entry into school or childcare.
3. The requirement for a Tdap dose changes from grades 6-12 to grades 7-12. All students who are entering 7th through 12th grades must have one booster dose of the Tdap vaccine.

For the 2020-21 school year: In light of the pandemic, if a student cannot meet the immunization requirements by the first day of school and a student is fully participating in remote learning, the school will not exclude that student from school. The student will be immediately enrolled and served remotely.

For more information please visit the Washington State Department of Health's webpage at: <https://www.doh.wa.gov/YouandYourFamily/Immunization/SchoolandChildCare/RuleChanges>. You may also contact your school nurse.

FOOD SERVICE

School meals will continue to be available through all stages of Northshore Learns 3.0. Menus and information on the Food Service model during the current stage is available online along with nutritional information at www.nsd.org/meals. Beginning in the 2020-21 school year, Northshore School District will be utilizing a new Family Payment Portal by Titan School Solutions.

FREE AND REDUCED-PRICE BREAKFAST AND LUNCH

Families whose income falls within guidelines set by the U.S. Department of Agriculture should apply for free or reduced-price meals. All qualified students must reapply in September each year. All students who qualify for reduced-price meals can receive breakfast at no charge. Students K-3 who qualify for

reduced-priced meals will also be offered lunch at no charge. You can apply online at <https://family.titank12.com>, download an application at www.nsd.org/meals or request a paper application from the Food & Nutrition Department. To have an application mailed to you, call the Food Services Office at 425.408.7657 or email ebblack@nsd.org.

PAYING FOR SCHOOL MEALS

Titan School Solutions, the District's new Family Payment Portal, allows parents to make payments, track student purchases and move funds from one student to another within the household all in real time! Parents may pay online with Visa, MasterCard, Discover, and ACH. To set up a Family Portal account, visit <https://family.titank12.com>. There is no charge for parents to sign their students up for the Family Portal with Titan School Solutions.

LOW BALANCE NOTIFICATIONS/TRACKING MEAL BALANCES

Families that are registered in the Family Portal will receive a low balance notification by email. You can view your student's meal account balance and view cafeteria purchases, at no charge, through the Titan Family Portal <https://family.titank12.com> or the Northshore School District Mobile App. The mobile app is free and available in the App Store or Google Play (iOS or Android only) by searching for "Northshore School District". The District's Mobile App webpage at www.nsd.org/mobileapp provides more information about this feature and offers step-by-step login instructions.

PAY ONLINE FOR STUDENT FEES, FINES, AND SALES

Parents may pay for student fees, fines and make other purchases online with a credit card using the Online Payment (TouchBase) program <https://schoolsales.nsd.org/>. Use your school-issued TouchBase username and password to access the program.

RIDING THE BUS TO SCHOOL

Transportation information and forms may be found online at www.nsd.org/bus. This information includes bus stop locator (Elink), special needs services, student safety and conduct forms, bus pass, Emergency/Snow, suggested walking area maps, and more. The bus stop locator, E-link, helps you determine a student's assigned bus number, stop location and estimated pick-up time within the school service area. All students are required to be at their bus stop five (5) minutes in advance of the posted bus arrival time and Kindergarten and Special Ed students must be met by a parent/guardian at the bus stop. (See permission to release forms at www.nsd.org) Bus stop locations will be available on E-link by the end of August. Information for specialized programs (Preschool, HiCAP, Special Ed) can be located under the advanced tab. Bus drivers may call with specific bus stop details for Special Ed and preschool students. Waiver students are not assigned/eligible for transportation but may inquire about bus space availability using the Transportation Inquiry Form located on the website.

Forms will start to be processed 4 weeks after school resumes and may take several weeks before the assessment is completed. If you need assistance accessing bus stops and/or additional information, contact Transportation at transportation@nsd.org.

RELIGIOUS AND CULTURAL OBSERVANCES

The Racial & Educational Justice Department, formerly known as the Equity & Diversity Department, worked with its religion subcommittee to identify and select the religious and cultural observances that are printed in this calendar. Faith leaders and cultural leaders were also consulted when selecting these observances. For more information and a full list of observances visit our district website at www.nsd.org/our-district/who-we-are/racial-educational-justice/observances. For questions, contact the Racial & Educational Justice Department at educationaljustice@nsd.org.

Información para el Estudiante

INSCRIPCIONES

Los nuevos estudiantes se podrán inscribir en la escuela durante todo el año a través de la página web. La escuela se designará basada en la dirección donde se reside. Visite la página web del distrito [nsd.org/findmyschool](https://www.nsd.org/findmyschool), para determinar el área de asistencia de su hijo(a).

DOCUMENTOS REQUERIDOS PARA LA INSCRIPCIÓN: Prueba de fecha de nacimiento del niño (acta de nacimiento o pasaporte) prueba de domicilio, lista de vacunas o inmunizaciones y documento de retiro de la escuela anterior o boleta de calificaciones de la escuela anterior (para los grados 6to al 12vo solamente). Los estudiantes que ingresen al jardín de niños (kínder) o al primer grado deberán tener cinco años o seis años cumplidos antes del 31 de agosto (dependiendo del grado a ingresar).

JARDÍN/ KÍNDER

Los futuros estudiantes de jardín (Kinder) para el año escolar 2021-22 serán inscritos a través de nuestra página web [nsd.org](https://www.nsd.org) comenzando a mediados de enero del 2021. La página web provee instrucciones y guía sobre los documentos e información que nosotros necesitaremos para poder registrar al futuro estudiante. Si usted tiene preguntas adicionales, deberá de contactarse a la escuela designada de su niño/niña.

EXENCIONES (WAIVERS)

PARA ALUMNOS FUERA DEL DISTRITO: Las familias que residan en otro distrito y les gustaría asistir al Distrito Escolar de Northshore deberán completar el formulario de elección de transferencia (Choice transfer form) disponible en su distrito de residencia. Las familias necesitarán aplicar cada año.

PARA ALUMNOS EN EL DISTRITO: Las familias que viven dentro de los límites geográficos del Distrito Escolar de Northshore y quieren asistir a otra escuela del distrito de Northshore diferente a la que tienen asignada por su zona de residencia, deberán completar una exención. Los formularios de las exenciones están en la página web: <https://www.nsd.org/schools/get-started/waivers/waiver-forms> o en las Oficinas de Servicios Estudiantiles (425.408.7725).

ALUMNOS DEL DISTRITO PARA ASISTIR A OTRO DISTRITO (VARIANCE): Las familias que vivan dentro de los límites geográficos del Distrito Escolar de Northshore y quieren asistir a una escuela en otro distrito deberán completar el formulario de liberación (release form). Este formulario está disponible en la página web: <https://www.nsd.org/schools/get-started/waivers/waiver-forms> o en las Oficinas de Servicios Estudiantiles (425.408.7725).

MCKINNEY VENTO: La Ley McKinney-Vento es una legislación federal que define a “los niños y jóvenes sin hogar” como individuos que carecen de una residencia regular y adecuada para pasar la noche. El propósito de esta ley es asegurar que los niños y jóvenes sin hogar se inscriban y tengan éxito en la escuela. Para mayores informes sobre los Servicios para personas sin hogar de Northshore, por favor consulte en la página web: <https://www.nsd.org/resources/support/homeless-services>.

¿QUÉ ES “CHILD FIND”?

El proceso de localizar y evaluar a los niños con discapacidades se conoce como “Child Find”. La Ley de Educación para Individuos con Discapacidades (IDEA) exige a todos los distritos escolares que localicen, evalúen, y ofrezcan servicios a las personas discapacitadas desde recién nacidos hasta los 21 años. Comuníquese con el director o psicólogo escolar en su escuela si usted:

- Tiene preguntas sobre si su hijo(a) tiene una discapacidad
- Está preocupado sobre el desarrollo de su bebé, hijo o alumno preescolar
- Sabe que su hijo(a) tiene una discapacidad y está buscando servicios educativos adecuados
- Le gustaría saber cómo ayudar a su hijo(a) en edad escolar a que le vaya bien en la escuela

También puede contactarse con la oficina de Educación Especial para asistencia llamando al 425.408.7733. Cualquier estudiante o niño que esté inscrito o no en la escuela puede ser referido por los padres, personal escolar u otra persona conocedora de su estudiante para que le hagan una evaluación para educación especial. El equipo escolar lo invitará a tener una reunión para hablar sobre sus inquietudes y formular un plan de acción. Una evaluación de educación especial podrá ser recomendada en dicha reunión. Si su hijo(a) no tiene la edad escolar, por favor contáctese con Sorensen Early Childhood Center al 425.408. 5570.

INSCRIPCIÓN DE ESTUDIANTES CON CONDICIONES MÉDICAS

Comuníquese con los Servicios de Salud Estudiantil (Student Health Services) al 425.408.7728 o con la enfermera de la escuela si su hijo(a) tiene una condición médica que requiera:

- Medicamento en la escuela que sea inyectado (excepto los autoinyectores de epinefrina), los supositorios o la administración nasal
- Asistencia con un procedimiento durante el día escolar, como el azúcar en la sangre, cateterismo o aplicación de tubos gástricos para alimentación (G-tubes).

MEDICAMENTO DEL ESTUDIANTE/ CONDICIONES DE SALUD QUE AMENAZAN LA VIDA

Cuando se requiere que un estudiante tome medicinas durante el día escolar, ya sea con o sin receta médica, la oficina escolar deberá tener un formulario de autorización médica firmado por sus padres y un profesional de la salud con licencia.

- Este formulario está disponible en su escuela o en la página web del distrito <https://www.nsd.org/schools/get-started/health-services/medication-at-schools>.
- El medicamento entregado a la escuela por parte de los padres deberá estar en un frasco adecuadamente etiquetado o en su envase original.

Los estudiantes con condiciones de salud que amenazan la vida (LTC) deben, por ley, tener órdenes médicas firmadas y un plan de cuidado de la enfermería escolar antes de que inicien su asistencia a la escuela. Información se puede encontrar en <https://www.nsd.org/schools/get-started/health-services> o contactándose con la enfermera escolar para más información.

VACUNACIÓN

A partir del 1ro de agosto, 2020 hay cambios para las reglas de vacunación en las escuelas y los centros de cuidado infantil en el estado de WA. Estos cambios incluyen:

1. Por ley estatal, todas los registros de vacunación entregados a escuelas o centros de cuidado infantil después del 1ro de Agosto del 2020 deben ser verificados por su proveedor de salud. Significa que los registros de vacunación entregados a la escuela deben ser de un proveedor de salud o deben adjuntar la documentación de un proveedor de salud a un formulario escrito a mano que demuestre que los registros de su hijo/a son precisos. Adicionalmente, usted puede enviar el Certificate of Immunization Status (CIS) que puede imprimir del Immunization Information System (IIS), el cual no tiene la firma del proveedor de salud
2. Los estudiantes que estén progresando para completar sus requisitos de vacunación recibirán un estado condicional para ingresar a la escuela o al centro de cuidado infantil.
3. Los requerimientos para la dosis de Tdap cambia de los grados 6 - 12 al 7 – 12. Todos los estudiantes que están entrando al grado 7 hasta el grado 12 deben tener una dosis extra de la vacuna T dap.

A la luz de la pandemia, si el estudiante no puede cumplir con los requisitos de la inmunización para el primer día de escuela y el estudiante está participando completamente en el aprendizaje remoto, la escuela no podrá excluir al estudiante. El estudiante será inmediatamente inscrito y servido remotamente.

Para más información visite el Departamento de Salud del Estado de Washington en la página web: <https://www.doh.wa.gov/YouandYourFamily/Immunization/SchoolandChildCare/RuleChanges>. También puede contactarse con la enfermera de la escuela.

SERVICIOS DE ALIMENTOS

Las comidas del distrito (lonches) seguirán estando disponibles durante todas las etapas de Northshore Learns 3.0. Los menús y la información del programa de servicios de alimentos de la etapa actual se encuentran disponibles junto con la información nutricional en la página web www.nsd.org/meals. A partir del año escolar 2020-21, el distrito escolar de Northshore utilizará un nuevo portal de pagos Family Payment Portal de Titan School Solutions.

DESAYUNOS Y LONCHES GRATUITOS Y DE PRECIOS REDUCIDOS

Los padres que tengan ingresos que cumplan con las directrices establecidas por el Departamento de Agricultura de EUU, deben solicitar para obtener comidas gratuitas o de precios reducidos. Todos los estudiantes calificados deben solicitar en setiembre de cada año. Todos los estudiantes que califiquen para los precios reducidos, podrán recibir un desayuno sin costo alguno. Los estudiantes en grados K al 3ro que califiquen para precios reducidos en comidas también se les servirán lonches sin costo alguno. Usted puede solicitar en la página web <https://family.titank12.com>, o descargar la solicitud en la página web www.nsd.org/meals, o pedir una aplicación en papel en la oficina de servicios de alimentos (Food and Nutrition Department). Para que le enviemos una solicitud por correo, llame a la oficina de servicios de alimentos al 425.408.7657 o envíe un correo electrónico a ebblack@nsd.org.

PARA HACER PAGOS DE LAS COMIDAS ESCOLARES

Titan School Solutions es el nuevo portal del distrito (Family Payment Portal) donde los padres pueden hacer sus pagos en la página web, monitorear las compras de los estudiantes, mover fondos de un estudiante a otro de la misma familia. Los padres pueden hacer los pagos con una tarjeta Visa, MasterCard, Discover, y ACH. Para crear una cuenta de pagos en Family Portal visite la página web <https://family.titank12.com>. No hay cobro para padres en registrar a su estudiante en Family Portal con Titan School Solutions.

NOTIFICACIONES POR BALANCES BAJOS/MONITOREO DE BALANCES DE CUENTAS DE COMIDAS

Las familias con una cuenta registrada en Family Portal recibirán notificaciones por correo electrónico cuando su balance esté bajo. Usted puede ver el balance de su cuenta y ver las compras en la cafetería sin ningún cobro extra a través del Titan Family Portal página web <https://family.titank12.com>; o en la aplicación móvil del distrito escolar de Northshore. Esta aplicación móvil es gratis y está disponible en App Store o Google Play (iOS o Android solamente) buscando a “Northshore School District”. La página web del distrito www.nsd.org/mobileapp provee más información y le da instrucciones paso a paso para que pueda registrarse.

PAGOS EN LÍNEA PARA CUOTAS ESTUDIANTILES, MULTAS Y VENTAS

Los padres podrán pagar las cuotas estudiantiles, multas y hacer compras en línea con una tarjeta de crédito usando el programa Online Payment (TouchBase) en la página web <https://schoolsales.nsd.org/>. Utilice su nombre de usuario y contraseña proporcionados por la escuela para TouchBase para acceder al programa.

VIAJANDO EN EL BUS ESCOLAR

Información y formularios de transporte para el año escolar se pueden encontrar en la página web www.nsd.org/bus. Esta información incluye el localizador de las paradas (E-link), los servicios especiales, los formularios de seguridad y conducta estudiantil, los pases de bus, emergencia/nieve, mapas de áreas sugeridas para caminar y más. El localizador, E-link, ayuda a determinar el número de bus asignado al estudiante, paradas del bus y el tiempo estimado para recoger al estudiante dentro del área de servicio escolar. Todos los estudiantes deben estar en la parada del bus cinco (5) minutos antes de la hora marcada de llegada, y los estudiantes del kínder y educación especial deben ser recibidos por sus padres o tutores en la parada del bus. (Consulte los formularios en www.nsd.org) Las paradas de bus estarán disponibles en E-link a finales de agosto. Información para los programas especializados (preescolar, HiCAP, educación especial) pueden ser localizados en la pestaña “advanced”. El chofer del bus podría llamar con detalles específicos de las paradas para estudiantes de educación especial y kínder. Estudiantes con exención (waiver) no están asignados o califican para el transporte, pero pueden informarse sobre la disponibilidad de espacio usando el formulario de consulta de transporte (Transportation Inquiry Form) localizada en este sitio web.

Los formularios serán procesados después de cuatro semanas que comiencen las clases y podría tomar varias semanas hasta que las evaluaciones sean completadas. Si necesita asistencia para el acceso de las paradas de bus y/u otra información adicional, contacte a transportación en la página web transportation@nsd.org.

OBSERVANCIAS RELIGIOSAS Y CULTURALES

El Departamento de Justicia Racial y Educativa, anteriormente conocido como el departamento de equidad y diversidad, trabajó con su subcomité de religión para identificar y seleccionar las observancias religiosas y culturales impresas en este calendario. También se consultó a los líderes religiosos y culturales al seleccionar estas observancias. Para obtener más información y una lista completa de las observancias, visite la página web del distrito en www.nsd.org/our-district/who-we-are/racial-educational-justice/observances. Para preguntas contacte con Racial & Educational Justice Department en la página web educationaljustice@nsd.org.

Release of student information

Federal law prohibits schools from releasing student information without parent/guardian permission, except for what is termed “directory information.” Directory information about students may be released by the District without parental consent. The District will not release directory information for commercial or fundraising purposes.

Directory information includes the following: Student’s name, address, telephone listings, electronic email address, photograph and audio/video depiction, student’s projects/artwork, date of birth, major field of study, dates of attendance, grade level, participation in officially recognized activities and sports, weight and height of members of athletic teams, degrees, honors and awards received, and the most recent educational agency or institution attended. Release of student directory information is guided by Board Policy 3250.

Images of students are sometimes used in printed, web or video-based district or school-produced materials or for use by the news media. Published photos in yearbooks, student/school newspapers, school handbooks, etc., and the electronic media, including websites, are considered public domain and can be reproduced by the media.

Parents/guardians who do not want their student’s directory information released must complete and return a Permission to Withhold Directory Information form to their child’s school by October 15. The form is available at www.nsd.org, on Schoology and in school offices. This form should be submitted annually to your student’s school office on or before October 15 of the current school year. Forms will be accepted after the deadline, but the District cannot be responsible for the release of Directory Information if the Permission to Withhold Student Information form is received after the October 15 deadline of the current school year. Extractions of Directory Information to non-district persons or outside organizations will not be processed between the first day of school and October 15 of the current school year.

The withhold directory restriction will remain on your student’s record for the current school year. Families will have the opportunity to subscribe yearly. The district will honor your request to withhold the information as listed, but cannot assume responsibility for contacting you for subsequent permission to release that information. Should you initially decide to withhold Student Directory Information, you may authorize the cancellation of your request at any time during the current school year.

Please use one form for each child in your household. Forms can be downloaded from the district website, www.nsd.org, or obtained in the office of all schools. Forms must be submitted each year your child is enrolled. Students who are 18 years or older may submit this notification themselves.

OBTAINING STUDENT RECORDS

Parents and eligible students have the right to:

1. Inspect and review the student’s education records;
2. Request the amendment of student education records to ensure that they are not inaccurate, misleading or otherwise in violation of the student’s privacy or other rights;
3. Consent to most disclosures of personally identifiable information from education records; (see release of student information) except to the extent that the Family Education Rights and Privacy Act (FERPA) and the regulations in this part authorize disclosure without consent. One exception, which permits disclosure without consent, is disclosure to school officials with legitimate educational interests. A school official is a person employed by the District as an administrator, supervisor, instructor, or support staff member (including health or medical staff and law enforcement unit personnel); a person serving on the School Board; a person or company with whom the District has outsourced services or functions it would otherwise use its own employees to perform (such as an attorney, auditor, medical consultant or therapist.) A school official has a legitimate educational interest if the official needs to review an education record in order to fulfill his or her professional responsibility;
4. File a complaint with the U.S. Department of Education concerning alleged failures to comply with the Family Education Rights and Privacy Act (FERPA);
5. Obtain a copy of School Board Policy 3600 Student Records. A copy of this policy is available by request at any school or the offices of the Regional Assistant Superintendents located at the district’s Administrative Center, 3330 Monte Villa Parkway, Bothell, WA 98021-8972.

DISTRICT NEWS AND INFORMATION

Northshore School District has resources to update you on the latest district news and information. Please contact the Communications Department, 425.408.7670, if you have any questions or need additional assistance.

- **District Information Line** 425.408.6001
- **Spanish Information Line** 425.408.6024
- **District website** nsd.org
- **District E-newsletter** nsd.org/connections
- **District Newsletter** nsd.org/community
- **District E-fliers** nsd.org/efliers
- Follow us on Facebook, Twitter and Instagram

RESOLVING A CONCERN

Concerns can be most accurately and efficiently addressed by those closest to the problem. The board encourages you to follow the steps outlined below, proceeding to the next level as necessary. If you need help determining the appropriate person to call, please call the Communications Department at 425.408.7670

SCHOOL RELATED CONCERN

Discuss with the teacher/staff member involved

Principal

Regional Assistant Superintendents,
Superintendent or designee

Present to the School Board through the
formal citizen’s complaint procedure*

DISTRICT CONCERN

Appropriate District Department

Superintendent or designee

Present to the School Board through the
formal citizen’s complaint procedure.*

**Forms available in the Superintendent’s Office*

****This information is under review and may be updated.***

Using technology during school

We live in a global and digital world – a world changed by technology and new ideas about how we communicate with one another and exchange information. As a result, students must develop the research, information fluency, and technology skills that will allow them to be successful, safe and ethical in this digital world. For this reason, students are provided computer access privileges during instruction, as well as access to the internet, email, digital communication and collaboration tools, online learning spaces and electronic educational resources. These resources, tools and equipment are essential to teaching and learning.

The guidelines for responsible use of these tools are outlined in School Board Procedure 2022P (see the procedure at nsd.org/procedure2022.) Standard applications and accounts are configured for student use, but are not limited to:

STUDENT DISTRICT ACCOUNTS

Each student is provided a District account that permits access to District and online services and is intended to be used for the student's educational activities. These accounts will be used to log on to district owned computers and will provide students access to a cloud-based folder where important documents and projects can be stored. These credentials are also used to access the Library Catalog, Google for Education services, videoconferencing services and other educational systems.

SCHOOLGY: OUR LEARNING MANAGEMENT SYSTEM

Schoology is the District's new learning management system. This tool provides students, parents/guardians and teachers a way to engage with learning materials from home, in the classroom and beyond. Families can access course materials, grades, calendars and more.

CLEVER: YOUR GATEWAY TO DISTRICT APPLICATIONS

Clever, a one-stop solution to find and access your student's applications, including the Schoology learning management system. After your Parent/Guardian Clever account is created, you can log in any time at <https://family.nsd.org>. Students and staff can access Clever at <https://my.nsd.org>.

NORTHSHORE GOOGLE APPS FOR EDUCATION ENVIRONMENT

This education-focused Google Apps environment is hosted by Google and managed by the District. This collection of online applications provides students with a Google email account, calendar and access to GoogleDrive, where students can create, share and publish documents, spreadsheets, presentations and other artifacts for their learning. The District creates and manages user accounts, manages access to applications and email based on grade level organizations, and manages permissions. Email accounts created by the District for elementary students can only communicate with other email accounts created by the District. It is important to note that Google for Education accounts are covered by more restrictive data privacy practices than "regular" Google accounts, including a restriction on advertising and the use of student data for advertising purposes. At any time, a student's account can be reviewed for content and accounts should only be used for school-related work. More information about Google for Education's privacy practices is available at nsd.org/googleprivacy

ONLINE CURRICULUM SYSTEMS

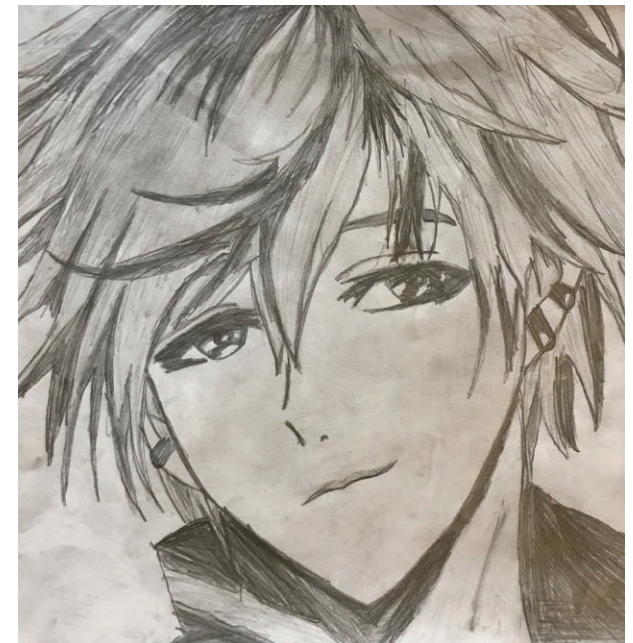
Most of the curriculum adopted in the District is accompanied by or depends on access to an online system where content and assessments are stored. Many of these systems require students to have a unique account created for them which allows them to access supplemental video content, take quizzes and strengthen their understanding about the ideas in the content area. For districtwide curriculum, the District creates and manages these accounts. In these cases, the terms of use and privacy policies are reviewed before providing any student account data to the vendor.

Under the Federal Children's Internet Protection Act (CIPA), the District is required to filter Internet access and to teach online safety. The District takes your student's safety and privacy very seriously and makes every effort to supervise and monitor student technology use. The District uses internet filtering software to block access to content that is obscene, pornographic or harmful to minors. Additionally, district-owned student computers run additional filtering software to provide protections when not on a district-controlled network. However, if a student is using their personal device on their family's network, their device is filtered at whatever level the family is filtering their device/network. Instruction is provided to all students in the area of Digital Citizenship through use of district-approved curriculum from Common Sense Media.

Given all of these factors, parents or guardians still do have the right to terminate their student's access to electronic tools and resources by signing the District Technology Opt- Out form. <http://bit.ly/31QSSKD> (El formulario también está disponible en español <http://bit.ly/2LdEVS8>) A printed copy of the form can be obtained from your school's office manager.

If you do not want your student to use district technology resources, please be aware that your decision to eliminate access to these tools may significantly affect your student's ability to learn during Northshore Learns 3.0 or to work collaboratively with his or her peers on class assignments and projects, and may impact the development of skills necessary to live and work in this increasingly digital world.

Complete the form only if you choose for your student NOT to use district technology while at school once it is safe to return to school buildings. Return the signed form to your school and schedule an appointment to discuss this with your principal or designated school administrator. After meeting with your administrator, the opt-out request will remain in effect for one school year, and expires at the end of the school year. To keep this opt-out request in effect, you must complete a new form every year.



Suyash | 5th | Fernwood Elementary | Sketch of a Boy

District programs

ADVANCED PLACEMENT (AP)

Advanced Placement classes provide college-level coursework for any student with the desire and willingness to work hard. Any student with the desire and willingness to work hard may enroll in the variety of AP classes offered at each high school. These courses provide rigor in a student's schedule and thorough coverage of a content area that students may find particularly interesting. AP courses are open enrollment and students may self-select classes to take each year. Completion of two AP courses satisfies a high school graduation requirement for students in the graduating class of 2016 and beyond.

ATHLETICS

Information for both middle and high schools and participation forms are available to download on the District website, www.nsd.org/nsdathletics.

CAREER AND COLLEGE READINESS / 425.408.7711

The Career and College Readiness program partners rigorous core curriculum with exploration of career pathways using industry-based standards to prepare students for postsecondary education and to meet the dynamic demands of the global economy. Students have the opportunity to explore career pathways in arts and communications, business and marketing, social services and education, science and technology, health services, and technology preparation. Please contact the counseling office of your child's school for more information.

Students have the opportunity to explore STEM courses in high demand fields of study such as environmental technology/renewable energy, biomedical sciences, engineering, information technology and robotics through the Career and College Readiness Program. Acquisition of core skills in exploration, problem solving, discovery, critical thinking, teamwork and innovation is the focus of STEM programs. Please contact the counseling office of your child's school for more information.

The Career and Technical Education (CTE) program provides courses at each high school that offer CTE Dual credit. These CTE courses combine academic and professional strands and are designed to give students a head start on the way to a community or technical college degree. Please contact a high school counselor or career specialist about details on CTE Dual credit programs. Completion of two Tech Prep courses satisfies high school graduation requirements for students in the graduating class of 2016 and beyond.

CHINESE LANGUAGE PROGRAM / 425.408.5300

Sunrise Elementary School provides a Mandarin Chinese program, beginning in first grade for students from around the district. This program will build students' ability to listen, speak, read and write in Mandarin Chinese over several years. Roughly 20% of the school day will be spent learning and using Mandarin in first grade. By the end of their first year, students' ability to listen and speak in Mandarin will equate with the high-novice level of language acquisition. Students' ability to read and write in Mandarin will equate with the low- to mid-novice level of Mandarin. Percentages of time learning and using Mandarin will increase to 30% in second grade, 40% in third grade, and 50% in fourth and fifth grade. Please contact Sunrise Elementary Principal Steve Hopkins shopkins@nsd.org or Chief Strategy Officer Tracy Meloy tmeloy@nsd.org for more information about the program and enrollment process.

COLLEGE IN THE HIGH SCHOOL

Students have the opportunity to take college courses taught by high school teachers and earn college credit at the same time from area colleges such as Cascadia College or the University of Washington. Students who choose to take courses for college/ university credit pay the college/university fee and meet all content requirements in addition to the high school course content. Students earning college/university credits will receive a grade and transcript from the college/university. Specific courses vary by high school. Please contact a high school counselor for details on College in the High School courses. Completion of two College in the High School courses satisfies a high school graduation requirement for students in the graduating class of 2016 and beyond.

DUAL LANGUAGE PROGRAM / 425.408.5400

Woodin Elementary School provides a dual language program where students from different language backgrounds learn English and Spanish together through intentionally planned instruction. The program follows a 50-50 model, meaning that starting in kindergarten, 50% of instruction occurs in Spanish and the other 50% is delivered in English. Approximately half of our students come from dominant Spanish speaking families, with the other half from dominant English speaking families. Students learn in an integrated setting serving as language models for each other and learning from one another. Our goal is for students to develop grade level competency while becoming bilingual, biliterate and bicultural. Please contact Principal Dawn Bowers dbowers@nsd.org, ELL Coach Sarah Phillips sphillips@nsd.org or Dual Language Representative Elizabeth Jette ejette@nsd.org, 425.408.5400, for more information about the program and enrollment process.

HIGHLY CAPABLE PROGRAM / 425.408.7713

The Northshore School District Highly Capable Program provides a continuum of services for students identified as most highly capable in grades K-12. Selection is based on multiple measures, which may include academic achievement in reading comprehension and/or applied math concepts, performance on cognitive abilities tests, and creativity measures. Service options vary at different grade levels and are based on the areas in which a student is found eligible. For more information, please visit the Highly Capable website at www.hicap@nsd.org.

INNOVATION LAB HIGH SCHOOL / 425.408.6200

Innovation Lab High School, Northshore's new choice high school, opened fall 2020. The school opened with about 110 freshman and 40 sophomore students. Future incoming freshman cohorts will accept up to 150 students. Students will explore their passions, while identifying their purpose in their community and in the world. Learning will be designed around the needs of today's students, and focused on developing the skills necessary for a future yet to be imagined. By 2022, the school will serve students in grades 9 - 12. The school is located at 2020 224th St SE, Bothell, WA 98021.

INTERNATIONAL BACCALAUREATE (IB) PROGRAM / 425.408.7355

The district IB Program located at Inglemoor High School is a rigorous, internationally recognized course of study open to all interested students in the Northshore School District. IB is designed to provide students with a foundation of in-depth learning in six subject areas. During the final two years of high school, students are uniquely challenged to meet high standards in every class. Expectations include self-directed and disciplined study, research, critical analysis of information and effective oral and written communication.

MIDDLE SCHOOL CHALLENGE PROGRAM

The Middle School Challenge Program provides a rigorous curriculum in English, Math, Science and Social Studies for students in grades 6-8. All sixth-graders will be enrolled in Challenge English/Language Arts, Math and Science. Students' math enrollment will match their current math trajectory. Challenge courses are considered open enrollment for students in seventh- and eighth-grade, therefore any student with the curiosity for learning and a willingness to work hard may self-select Challenge courses during the Middle School course registration process each spring.

NORTHSHORE NETWORKS / 425.408.4175

Northshore Networks is a teacher, parent and student contract partnership delivered in a once-a-week consulting model. Northshore Networks serves grades 1-12. For grades 7-12, additional academic support is provided in required weekly and bi-weekly classes. Teachers collaborate with students and parents to design and implement a customized curriculum consistent with district and state guidelines, high school graduation requirements and each student's individual learning needs. Northshore Networks is located at 18101 Avondale Road NE, Woodinville, WA 98077.

PACE—PARENTS ACTIVE IN COOPERATIVE EDUCATION

PACE is a family-based, alternative program for grades 1-5 emphasizing parent involvement. On a space-available basis, PACE is open to children whose parents commit to a minimum of 80 hours program assistance a year, per family, to support classrooms and student enrichment.

RUNNING START

High school juniors and seniors who show a readiness for college-level classes have the opportunity to attend a community college and receive high school and college credit at the same time under the Running Start program. Interested students should contact their high school counselor for more information.

SECONDARY ACADEMY FOR SUCCESS / 425.408.6600

Secondary Academy for Success (SAS) is Northshore's options high school, grades 9-12, for students seeking an alternative to the traditional secondary school. SAS is a highly successful program that helps students in a small school setting complete the required courses consistent with district and state guidelines, and all high school graduation requirements. Service learning, student leadership, environmental awareness, music and business partnerships and career integration highlight the SAS learning program. SAS is located at 22107 23rd DR S.E., Bothell, WA 98021.

SPECIAL EDUCATION / 425.408.7733

The Special Education program serves students from birth through twenty-one years of age. Instructional and support services are delivered by special education teachers, school psychologists, speech language pathologists, behavior specialists, occupational therapists, physical therapists, and educational assistants. In compliance with federal and state law, students with disabilities are served in the least restrictive environment to the maximum extent possible.

SORENSEN AND WOODMOOR SPECIAL NEEDS PRESCHOOL PROGRAMS / 425.408.5570

Sorenson and Woodmoor special needs preschools provide developmentally appropriate programs and services for eligible students ages 3-5 who may have a developmental delay in motor, communication, cognitive, social-emotional or adaptive skills.

Partnerships support student achievement

WHEN PARENTS PARTICIPATE, CHILDREN SUCCEED

Research shows that the more families participate in the education of their children, the better those students achieve in school. When schools, families and communities work together to support student learning, children generally achieve better grades and test scores, have better attendance, complete homework, show higher aspirations and motivation toward school, make better transitions and are more likely to graduate.

Here are some ways you can help your child be successful academically:

- Make education a priority.
- Ensure children attend school regularly, on time and prepared to learn.
- Establish regular routines at home that support good sleep, a healthy diet and daily exercise.
- Incorporate homework into the daily routine and provide a comfortable place for your child to study that is free from distractions.
- Limit the use of TV and video games.
- Be available to listen, talk, read and assist with homework.
- Show interest in schoolwork and out-of-school activities.
- Attend parent-teacher conferences and school events.
- Set standards of respectful behavior and value hard work, learning and responsibility.
- Establish clear, ongoing two-way communication with the school, especially if your child is having trouble with homework or not doing well on tests or progress reports.
- Volunteer at school to share your interests, skills and time.
- Offer praise and recognition for progress and accomplishments.

VOLUNTEERS MAKE A DIFFERENCE

Parent and community involvement in a student's education contribute to a successful school experience and has a positive impact on student achievement. We welcome parent and community volunteers to help as tutors, mentors, classroom speakers, committee advisors or assistants on special projects.

HOW CAN I HELP?

- Work with small groups with reading, writing, math, spelling, etc.
- Work with individual children—practice facts, read, assist with writing, computers
- Share personal talents, skills, interests or careers
- Provide mentor support to a student
- Become an elementary school art docent

HOW DO I START?

Individuals who volunteer for the Northshore School District need to complete the volunteer application. More information is available at <https://www.nsd.org/get-involved>.

PTA/PTSA

Each Northshore school has a PTA or PTSA made up of volunteers working for all children. These volunteers provide a wide variety of programs and activities to enhance student learning and encourage parent involvement. Visit the Northshore Council PTSA website, <http://www.northshorecouncilptsa.org>, for more information.

BUSINESSES MAKE GREAT PARTNERS

Higher standards in schools require advocates throughout the community. Our business, faith-based and civic representatives recognize that strong schools strengthen our community.

Our community partners demonstrate support for our schools through a variety of ways:

- Provide classroom presentations and speakers for career awareness
- Serve as mentors to students at school
- Donate funds, resources and employee hours
- Support school efforts to meet higher performance goals
- Ensure legislative support for consistent school funding, facilities and teacher training
- Welcome students to learn, observe, intern or complete service-learning projects

We encourage everyone in our community to become an active participant in education. For more information, contact the partnerships and volunteer coordinator at partnerships@nsd.org or 425.408.7673.

NORTHSHORE SCHOOLS FOUNDATION

The Northshore Schools Foundation funds relevant and impactful programs and services that amplify the work of our teachers and district to promote engaged learning and lifelong success for all Northshore students. The Northshore Schools Foundation is a non-profit charitable fundraising organization that operates separately from NSD thanks to generous contributions from parents, community members, local businesses and corporations. Learn more at www.nsdfoundation.org.

SUPPORT YOUR CHILD'S EDUCATION – VOTE

Use your right to vote and help make a positive impact on your child's education. You can register to vote by going to the following website: <https://www.sos.wa.gov/elections/voters/>

KEY ELECTION DATE: NOVEMBER 3, 2020 - GENERAL ELECTION

To be eligible to vote, you must be registered at least 30 days in advance of an election. Your application must be postmarked by the 30-day cutoff or it will not become effective until after the election. Remember to vote.

ACCOMMODATIONS STATEMENT

The Northshore School District will make every effort to provide accessibility to events, meetings and programs to individuals with disabilities. Please contact the building principal overseeing the activity or Director of Human Resources, ADA officer, at 425.408.7622 to request special accommodations.

EQUAL OPPORTUNITY EMPLOYER

Northshore School District will provide equal employment opportunity and treatment for all applicants and staff in recruitment, hiring retention, assignment, transfer, promotion and training. Such equal employment opportunity shall be provided without discrimination with respect to age, sex, marital status, sexual orientation including gender expression or identity, race, creed, religion, color, national origin, honorably discharged veteran or military status, the presence of any sensory, mental, or physical disability or the use of a trained dog guide or service animal by a person with a disability. The following employee(s) have been designated to handle questions and complaints of alleged unlawful discrimination: Director of Human Resources (Title IX, ADA, and Civil Rights Compliance), Director of Student Services (Section 504), 3330 Monte Villa Parkway, Bothell, WA 98021, (425) 408-6000.



Adeline | 7th | Kenmore Middle School |
Mountain Clouds at Leavenworth

Important telephone numbers and websites

DISTRICT INFORMATION:

Main District Number	425.408.6000
Information Line (recorded)	425.408.6001
Bilingual Message Line.....	425.408.6014
Spanish Language Information Line	425.408.6024
Athletic Fields Rain-Out-Line	425.408.6020
Website.....	www.nsd.org

DISTRICT DEPARTMENTS

Athletics.....	425.408.7725
Alternative Programs	
■ Chinese Language.....	425.408.5301
■ Northshore Family Partnership.....	425.408.4101
■ Northshore Networks.....	425.408.4175
■ Secondary Academy for Success	425.408.6600
■ Sorenson Early Childhood Center	425.408.5570
■ Summer School, Secondary (May–Aug.).....	425.408.6011
Business and Finance	425.408.7630
Communications	425.408.7670
Community Partnerships/Volunteers.....	425.408.7673
Early Childhood Education.....	425.408.5570
Elementary Education	425.408.7705
Facilities Rental.....	425.408.7810
Food Services.....	425.408.7654
Health Services.....	425.408.7728
Human Resources.....	425.408.7601
Instructional Support & Services	
■ State Assessments	425.408.7665
■ Career & College Readiness.....	425.408.7711
■ Curriculum, Instruction & Assessment, K-5.....	425.408.7714
■ Curriculum, Instruction & Assessment 6-12.....	425.408.7712
■ Highly Capable Program Services	425.408.7713
■ Instructional Technology.....	425.408.7755
■ Music Programs (elementary before-school)	425.408.7247
Secondary Education	425.408.7703
Special Services	425.408.7709
■ Categorical Programs.....	425.408.7709
■ Special Education.....	425.408.7733
Student Services/Athletics/Discipline	425.408.7725
Superintendent	425.408.7701
Deputy Superintendent.....	425.408.7624

Support Services.....	425.408.7801
Technology	425.408.7750
Transportation	425.408.7900

ACTIVITIES & YOUTH ORGANIZATIONS

Bothell Cougar Junior Football	bcjfa.org
Scouts BSA.....	206.725.5200
Boys & Girls Club, Kirkland.....	425.827.0132
Camp Fire.....	206.461.8550
4-H – King County.....	206.263.1923
4-H – Snohomish County.....	425.357.6044
Girl Scouts, Western Washington.....	800.541.9852
Little Leagues	
■ North Lake	northlakell.org
■ North Bothell	northbothelllittleleague.org
■ Northshore.....	northshorell.com
■ Woodinville	woodinvillelittleleague@gmail.com
Northshore Girls Slowpitch and Softball Assn.	info@ngssa.com
Northshore YMCA	425.485.9797
Northshore Youth Basketball Assn.....	nybahoops.com
Northshore Youth Soccer Assn.	425.486.5106
.....	northshoresoccer.org

GOVERNMENT

City of Brier	425.775.5440
City of Bothell.....	425.806.6100
City of Kenmore.....	425.398.8900
City of Woodinville	425.489.2700
King County Council	206.477.1000
King County Sheriff.....	206.296.3311
Snohomish County	425.388.3411
Snohomish County Sheriff	425.388.3393

HUMAN SERVICES

Information and referrals to health and human services	211
ARC of King County.....	206.364.6337
Health Point	425.486.0658
Center for Human Services	206.362.7282
Child Care Resources/Seattle.....	206.329.1011
Community Health Access Program	206.296.0100
.....	800.756.5437
EvergreenHealth	
■ Kirkland.....	425.899.1000
■ Woodinville	425.481.6363

Hopelink, Kirkland.....	425.889.7880
King County Health Dept.	206.296.0100
Northshore Family Center.....	425.205.2004
Northshore Public Health Center	206.263.2850
Northshore Senior Center	425.487.2441
Northshore Youth & Family Services.....	425.485.6541
Snohomish Health District-Healthy Kids	425.339.5230
Within Reach	206.284.2465
Woodinville Fire & Life Safety.....	425.483.2131

LIBRARIES

Bothell	425.486.7811
Kenmore.....	425.486.8747
Kingsgate	425.821.7686
Woodinville	425.788.0733

NORTHSHORE COUNCIL PTSA

Northshore Council PTSA	northshoreptsacouncil.com
-------------------------------	--

NORTHSHORE SCHOOLS FOUNDATION

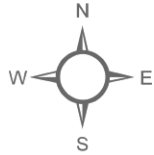
Supports Northshore student learning opportunities	425.408.7680
--	--------------

PARKS

Bothell (City of) Parks & Recreation	425.806.6760
King Co. Parks	206.296.4232
Redmond (City of) Parks.....	425.556.2300
Woodinville (City of) Parks & Recreation	425.489.2700
Kenmore (City of) Parks & Recreation	25.398.8900

EMERGENCY & CRISIS

Emergency Police, Fire, Medical Aid	911
Children Protective Services	800.379.3395
.....	206.691.2300
Lifewire (Domestic Violence Hotline)	800.827.8840
.....	425.562.8840
King County Crisis Clinic.....	211 / 206.461.3222
Washington Poison Center	800.222.1222
Snohomish Co. Care Crisis Line	425.388.7215
.....	800.584.3578



EVERETT
DISTRICT

SNOHOMISH
DISTRICT

EDMONDS
DISTRICT

Elementary Schools

- 1 Arrowhead Elementary
- 20 Canyon Creek Elementary
- 3 Cottage Lake Elementary
- 4 Crystal Springs Elementary
- 14 East Ridge Elementary
- 23 Fernwood Elementary
- 19 Frank Love Elementary
- 22 Hollywood Hill Elementary
- 5 Kenmore Elementary
- 15 Kokanee Elementary
- 9 Lockwood Elementary
- 6 Maywood Hills Elementary
- 10 Moorlands Elementary
- 29 Ruby Bridges Elementary
- 11 Shelton View Elementary
- 24 Sunrise Elementary
- 21 Wellington Elementary
- 7 Westhill Elementary
- 13 Woodin Elementary
- 26 Woodmoor Elementary

Administrative/Resources

- 96 Administration Building
- 99 Support Services
- 86 Transportation Center

High Schools

- 71 Bothell High School
- 72 Inglemoor High School
- 77 Innovation Lab High School
- 74 North Creek High School
- 59 Secondary Academy for Success
- 73 Woodinville High School

Middle Schools

- 43 Canyon Park Middle School
- 42 Kenmore Middle School
- 46 Leota Middle School
- 47 Northshore Middle School
- 44 Skyview Middle School
- 45 Timbercrest Middle School

Other

- 81 Northshore Networks at Bear Creek (1-12)
- 82 Northshore Family Partnership at Bear Creek (K-8)
- 31 Sorenson Early Childhood Center (Pre-K)

MONROE
DISTRICT

RIVERVIEW
DISTRICT

LAKE
WASHINGTON
DISTRICT

LAKE
WASHINGTON
DISTRICT

SHORELINE
DISTRICT

Snohomish County
King County

	Administration		High Schools
	Support Services		Middle Schools
	Transportation Center		Elementary Schools
			Choice Schools



Northshore School District No. 417

3330 Monte Villa Parkway
Bothell, WA 98021- 8972
425.408.6000

English Information Line.....425.408.6001
Bilingual Message Line.....425.408.6014
Spanish Information Line.....425.408.6024
Athletic Fields Rain-Out Line.....425.408.6020

www.nsd.org

Follow us:

 @northshoreschooldistrict
 @northshore_sd  @northshore_supt
 @teamnorthshore

INTERPRETER/TRANSLATION SERVICES FOR PARENTS

Your child's education is very important. As the parent/guardian of a Northshore student, you have the right to participate in your child's education, including communicating with teachers and staff about your child. Northshore offers interpreter and translation services to parents free of charge. We encourage you to tell someone at your child's school if you need an interpreter or a translation. Please contact your school office or 425-408-6014 if you have any questions or concerns about Northshore's language services.

貴子弟的教育是很重要的, 基於您是 Northshore 的家長/監護人, 您有參與 貴子弟教育的權利, 包括與老師及職員做學生方面的溝通, 所有的口譯及筆譯服務對家長都是免費的. Northshore 校方鼓勵您若需要口譯員服務及筆譯服務請告知 任何校方人士, Northshore 若你有其它這方面的問題或任何擔憂, 請聯絡學校辦公室或致電辦公室, 425-408-6014.

귀댁 자녀의 교육이 매우 중요합니다. Northshore 노스쇼어학군의 학생 학부모/보호자로서, 귀하께서는, 귀자녀에 관해서 교사와 임원들과 대화하는 것도 포함하여, 귀자녀의 교육에 개입할 권리가 있습니다. Northshore 노스쇼어에서는 '학부모님께' '통번역' '서비스'를 '무료'로 '제공'하고 '있습니다.' '만일' '귀하께서 통번역이 필요하시면 서슴치 마시고 귀자녀 학교에 있는 누구에게

연락하시기를 격려드립니다. Northshore만일 노스쇼어 언어 서비스에 대해서 질문이나 우려가 있으시면 귀학교나 (425)408-6014로 연락 바랍니다.

మతీపలీల చదువు చాలా పర్రాముఖ్యమైనదీ. Northshore వోడ్యూర్యోధోయోక్త తలీలదండీరులు/సంరక్షకునోగ్రా మతీకుమారునో/కుమార్తెయోక్త ఉపాధ్యాయులు మరొయు సోబబందోతో పలీల చదువు వోషయమలై సంభాషించడానోక మోరు హక్కు కలగోయునోనారు. Northshore తలీలదండీరుల క్కొరకు దుబాసోలక్త అనువాద సవలను ఉచితంగా అందోసోతుందో. మతీపలీలలు అభ్యయసంచో పాఠశాలవద్ద మోరు అవసరమలై న దుబాసోలక్త అనువాదక సవలను గూర్చో మోతో తలీయజ్యయమనో మోమములను పర్రోత సహాసోతునోనాము. Northshore పాఠశాల యోక్త భాషా సవల నోమతీతో మతీకు ఏవలైనా పరశ్చనలు లోదా అందోజనలునోనటలలైతో, దయచోసో మోపాఠశాల అసోమనందు సంపరదించండో లక్త 425-408-6014 కాల చోయండో.

Образование вашего ребенка имеет большое значение. Являясь родителем / опекуном ученика округа Northshore, вы имеете право на участие в его образовании, в том числе на общение с учителями и персоналом школы по вопросам, касающимся вашего ребенка. Школьный округ Northshore предлагает родителям бесплатные услуги устного и письменного перевода. Если вам требуется помощь устного или письменного переводчика, сообщите об этом кому-либо из персонала школы, в которой

учится ваш ребенок. Свяжитесь с администрацией школы или со по телефону 425-408-6014, если у вас возникнут какие-либо вопросы или трудности со службой переводов Northshore.

Sự giáo dục của con quý vị là rất quan trọng. Là phụ huynh/người giám hộ của học sinh Northshore, quý vị có quyền tham gia chương trình giáo dục của con mình, gồm có việc liên lạc với giáo viên và nhân viên liên quan đến con quý vị. Northshore cung cấp dịch vụ thông dịch và biên dịch miễn phí cho phụ huynh. Chúng tôi khuyến khích quý vị nên thông báo cho một nhân viên tại trường học của con quý vị nếu quý vị cần thông dịch viên hoặc tài liệu dịch. Vui lòng liên hệ văn phòng nhà trường hoặc qua số 425-408-6014 nếu quý vị có bất kỳ thắc mắc hay quan ngại nào về các dịch vụ ngôn ngữ của Northshore.

La educación de su hijo(a) es muy importante. Como padre/tutor de un alumno de Northshore, usted tiene derecho a participar en la educación de su hijo(a), esto incluye comunicarse con los profesores y el personal para hablar sobre su hijo(a). Northshore ofrece servicios de traducción e interpretación sin costo para los padres. Si usted necesita un intérprete o una traducción por favor coméntelo con alguien de la escuela donde estudia su hijo(a). Por favor contacte a la dirección de la escuela o a al 425-408-6014 si tiene preguntas o inquietudes relacionadas con los servicios de traducción e interpretación de Northshore.

NON-PROFIT
U.S. POSTAGE
PAID
Permit #6
Bothell, WA